

varian

TECHNICAL ADVISORY GROUP MEETING VARIAN, BEVERLY

February 17, 2021

Confidential. Not to be copied, distributed, or reproduced without prior approval.
© 2019 APTIM - All rights reserved.

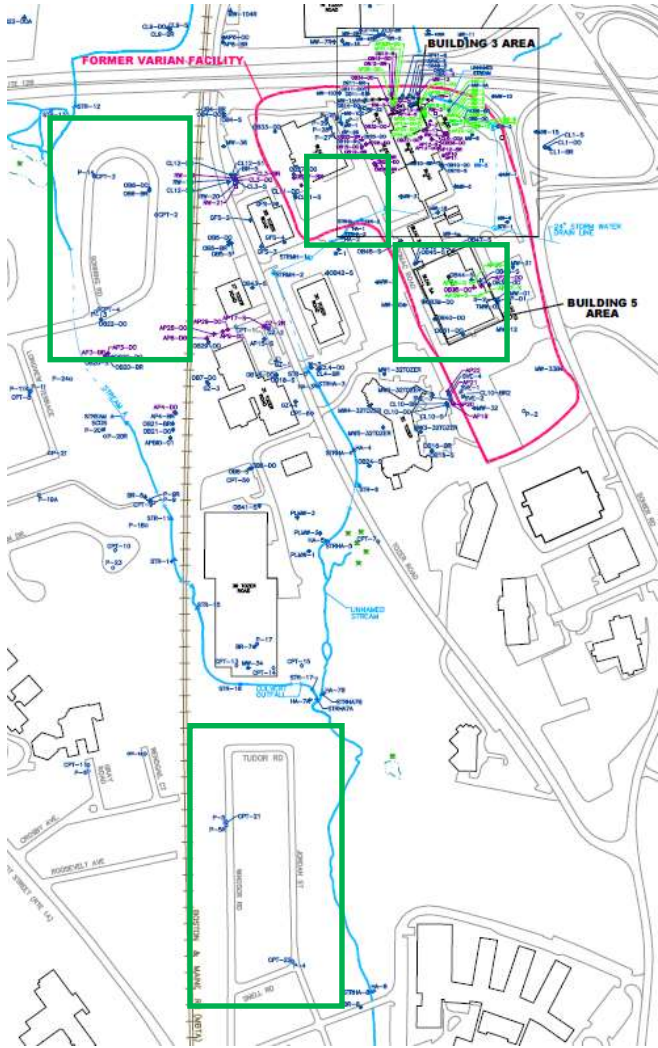


ASSESSMENT WORKPLANS

- ▶ Response to MassDEP Site Review
- ▶ January 25, 2021 Indoor Air Sampling Workplan (approved with conditions by MassDEP February 2, 2021)
- ▶ February 9, 2021 MassDEP Requested Assessment Workplan

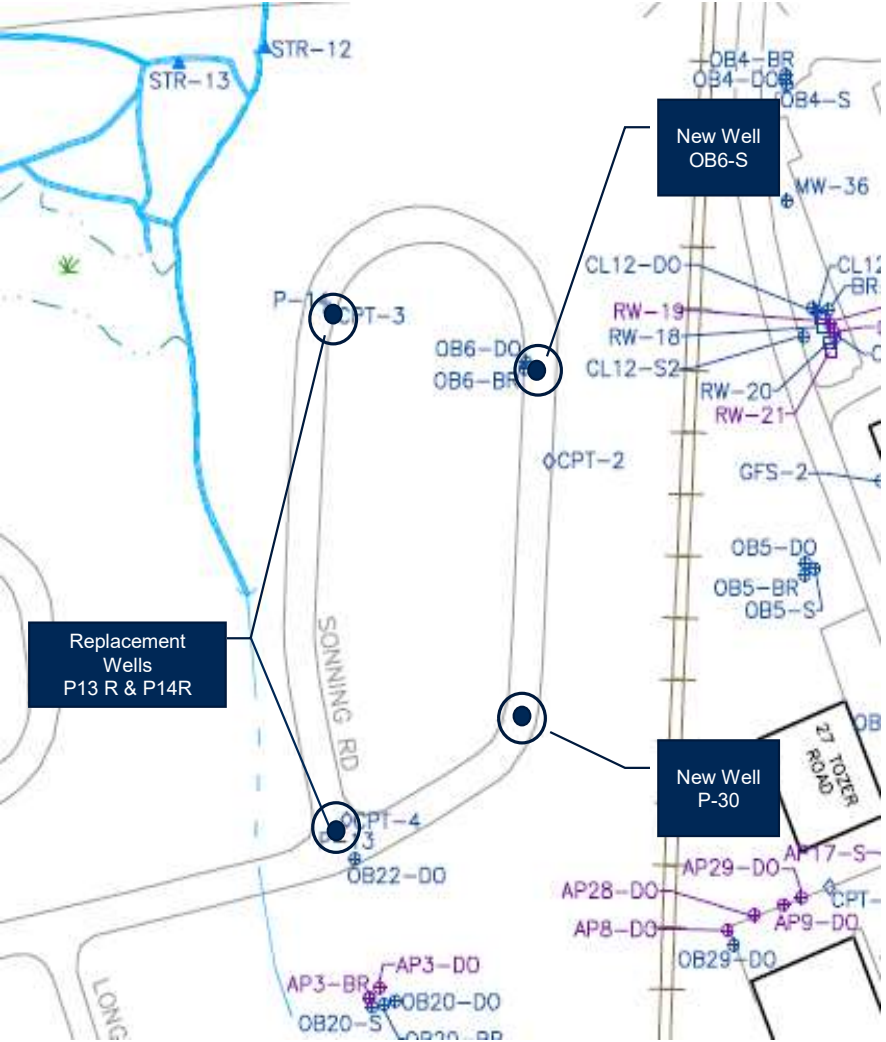


SUPPLEMENTAL GROUNDWATER ASSESSMENT



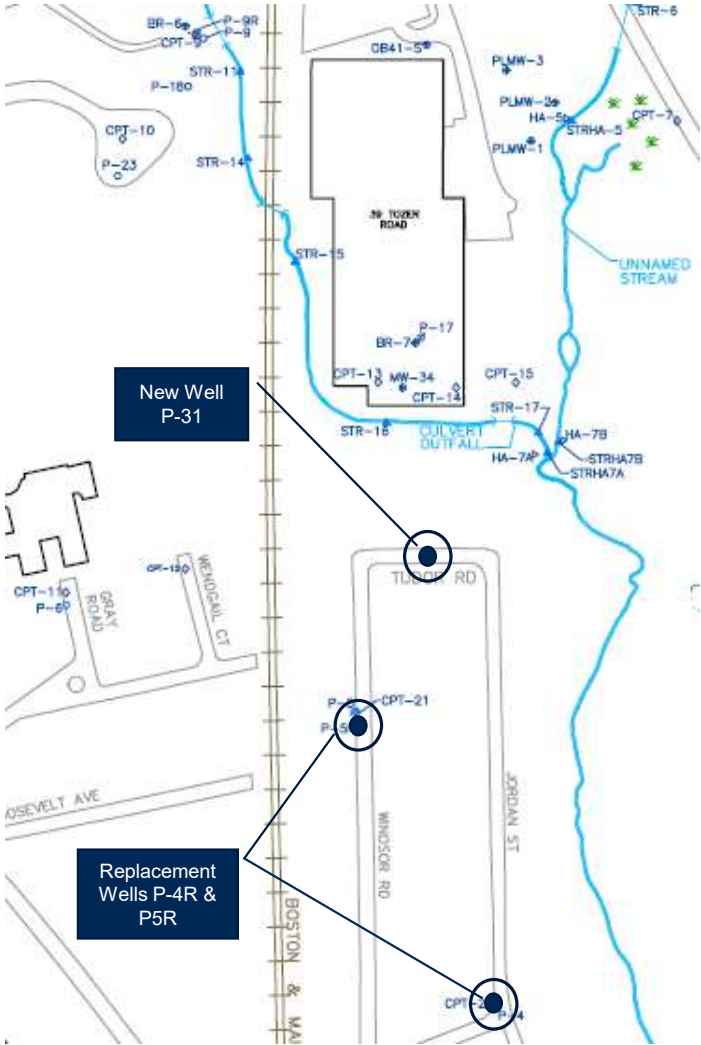
SONNING ROAD SUPPLEMENTAL GROUNDWATER ASSESSMENT

● New/Replacement Test Well

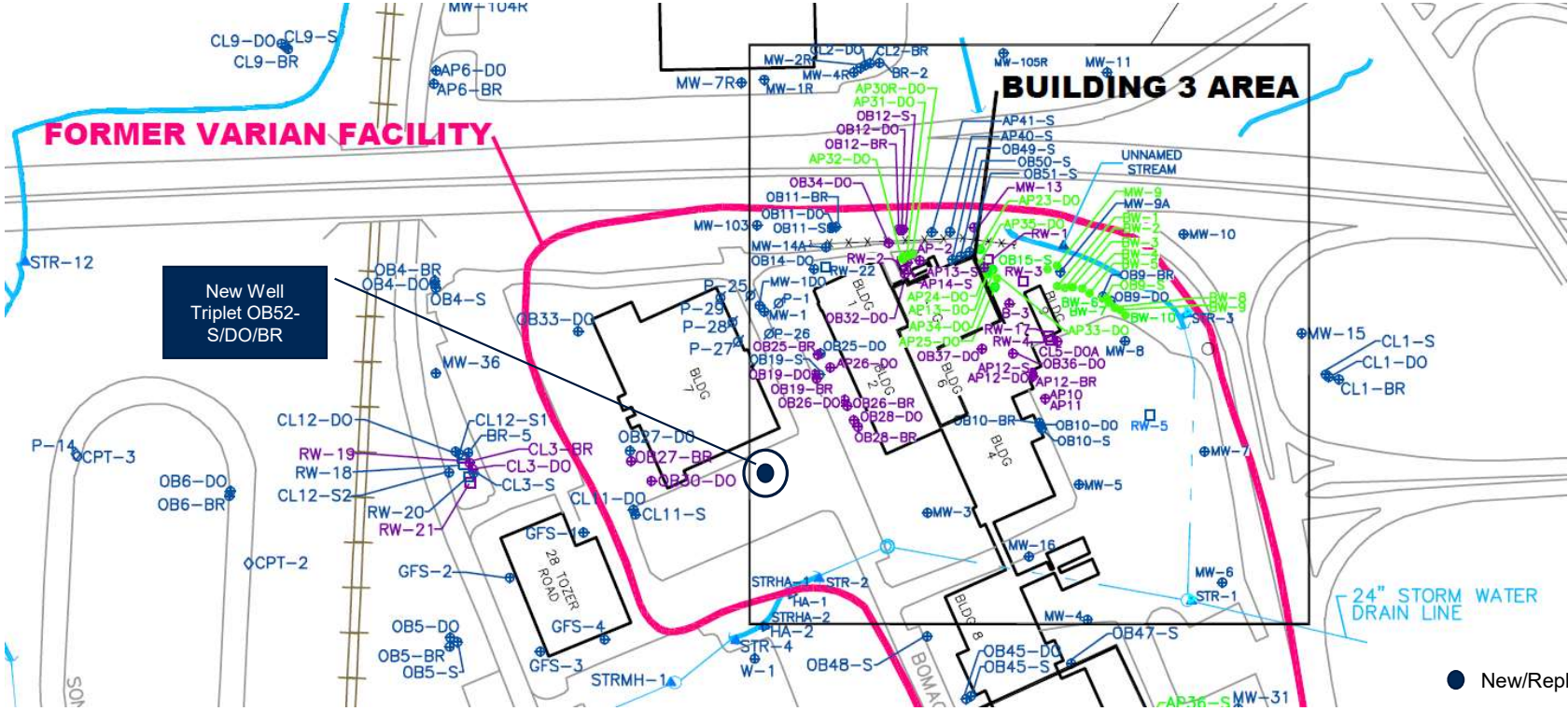


TUDOR RD, WINDSOR RD, JORDAN ST SUPPLEMENTAL GROUNDWATER ASSESSMENT

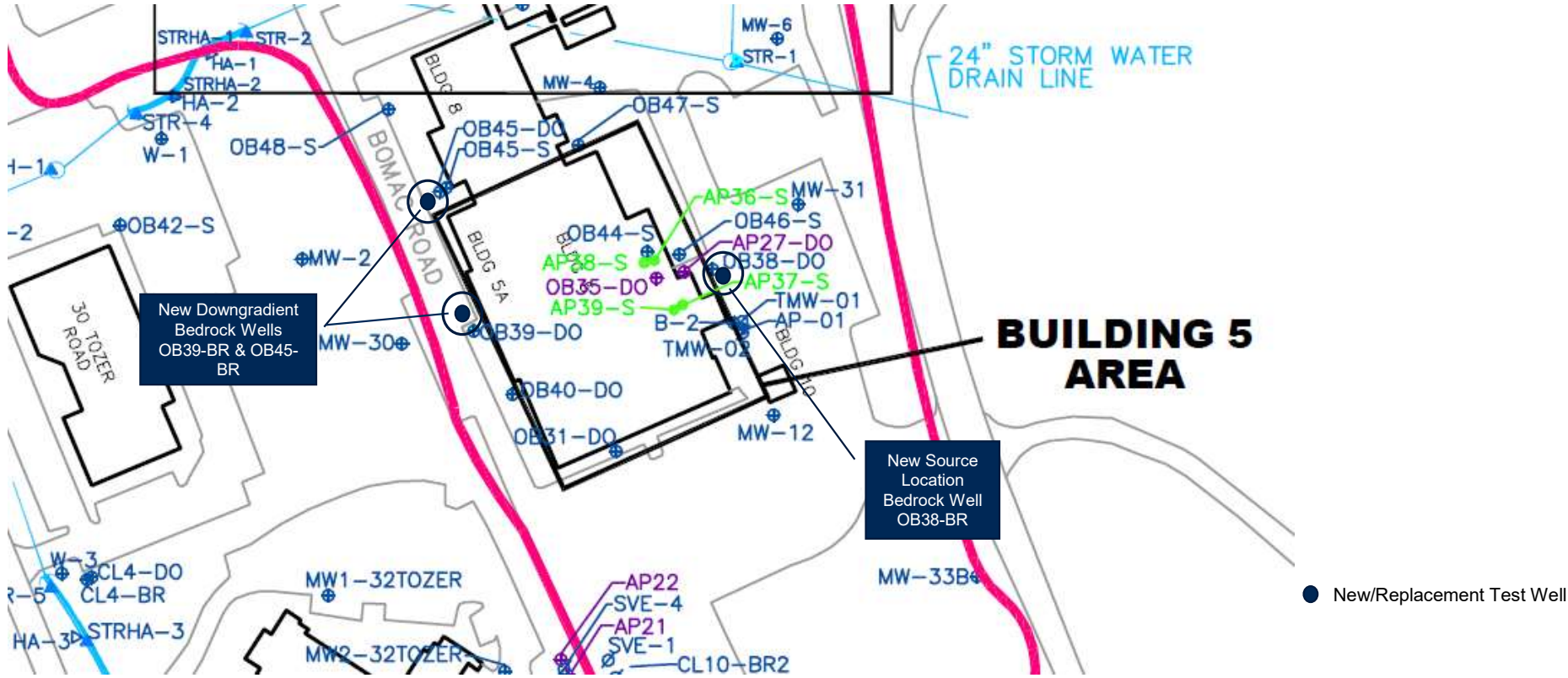
● New/Replacement Test Well



BLDG 3 SUPPLEMENTAL GROUNDWATER ASSESSMENT

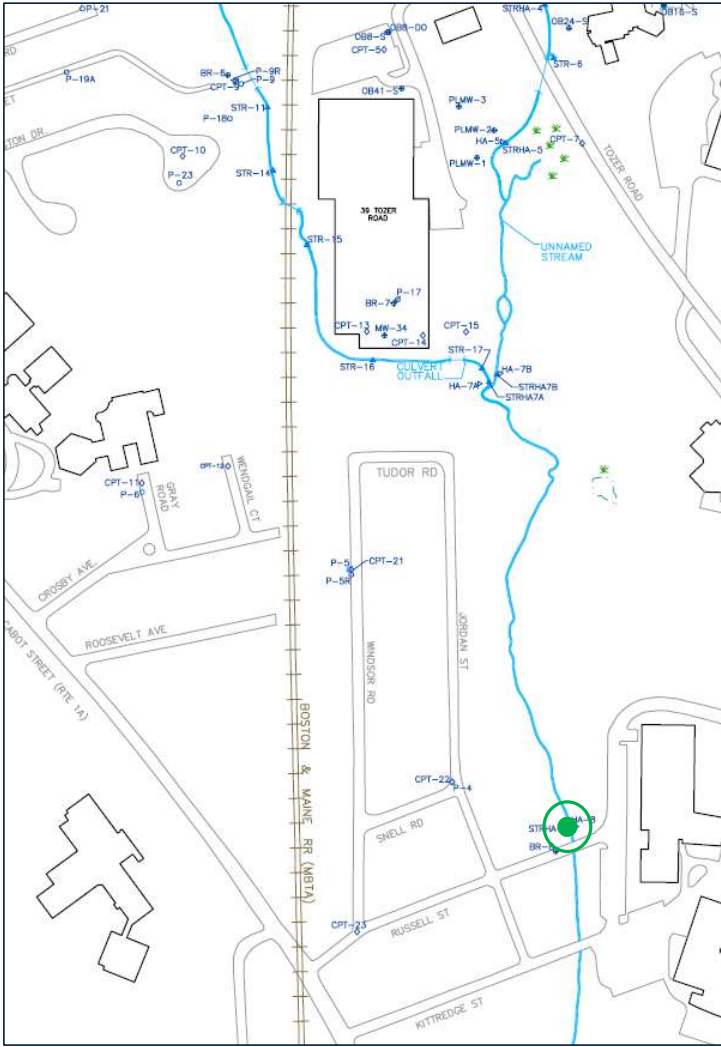
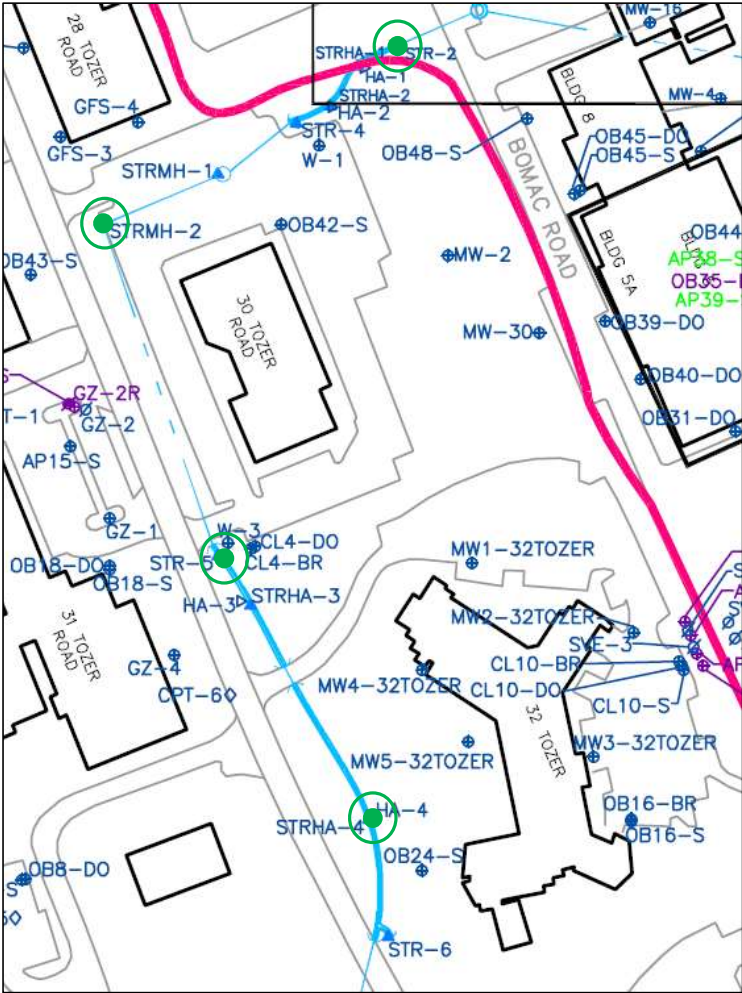


BLDG 5 SUPPLEMENTAL GROUNDWATER ASSESSMENT



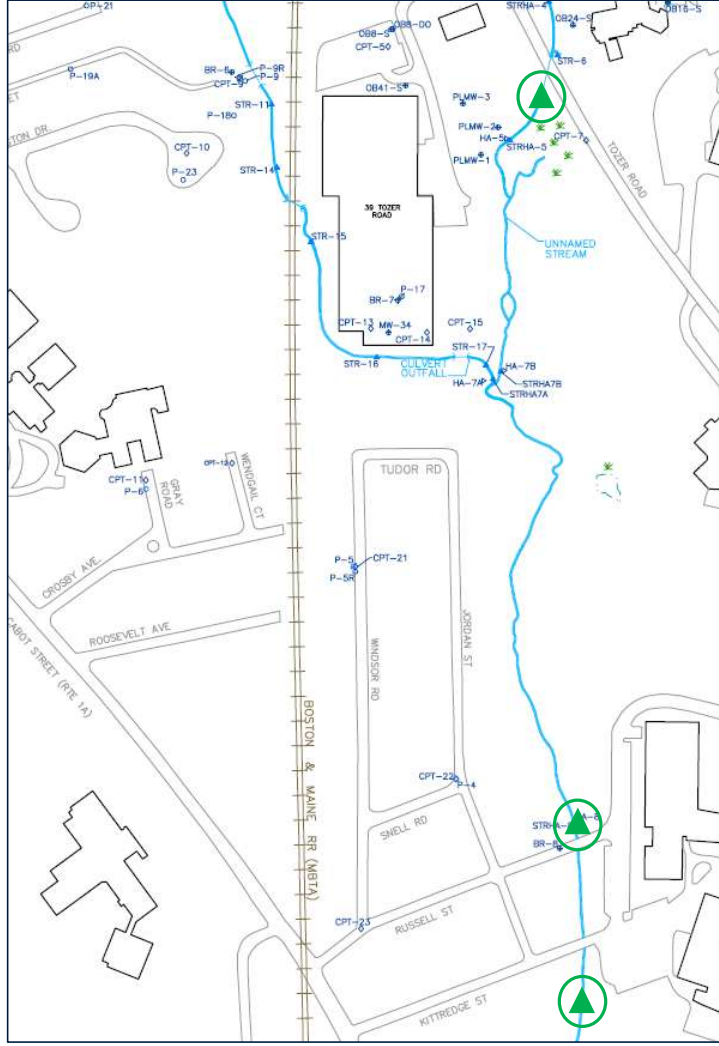
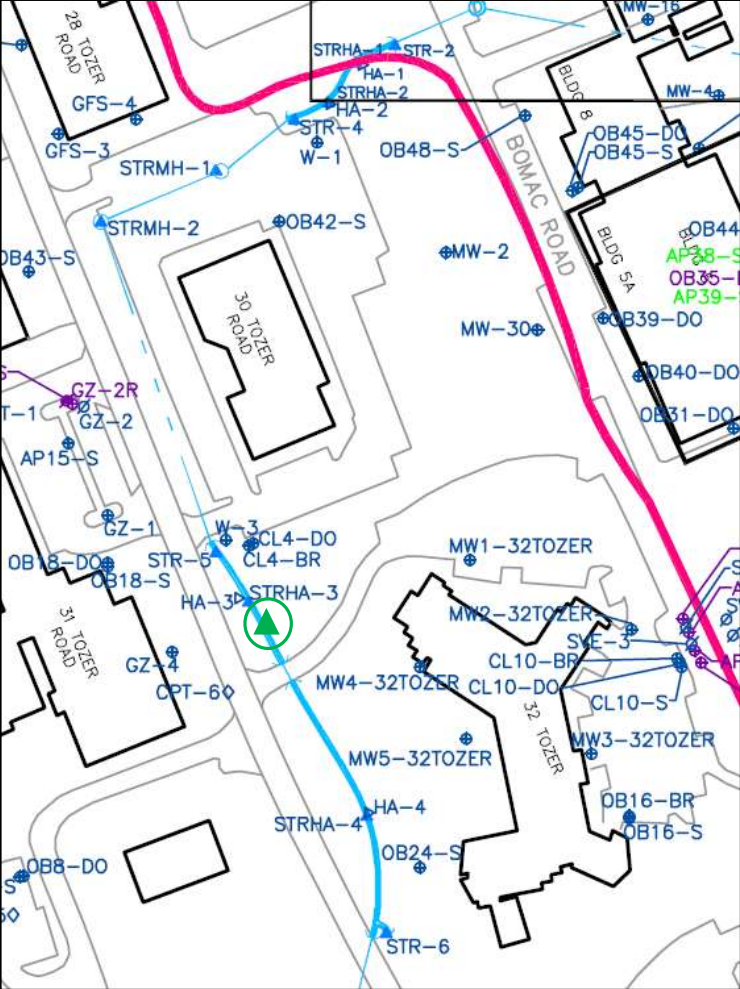
UNNAMED STREAM SUPPLEMENTAL SURFACE WATER ASSESSMENT

● Surface Water Sampling Location



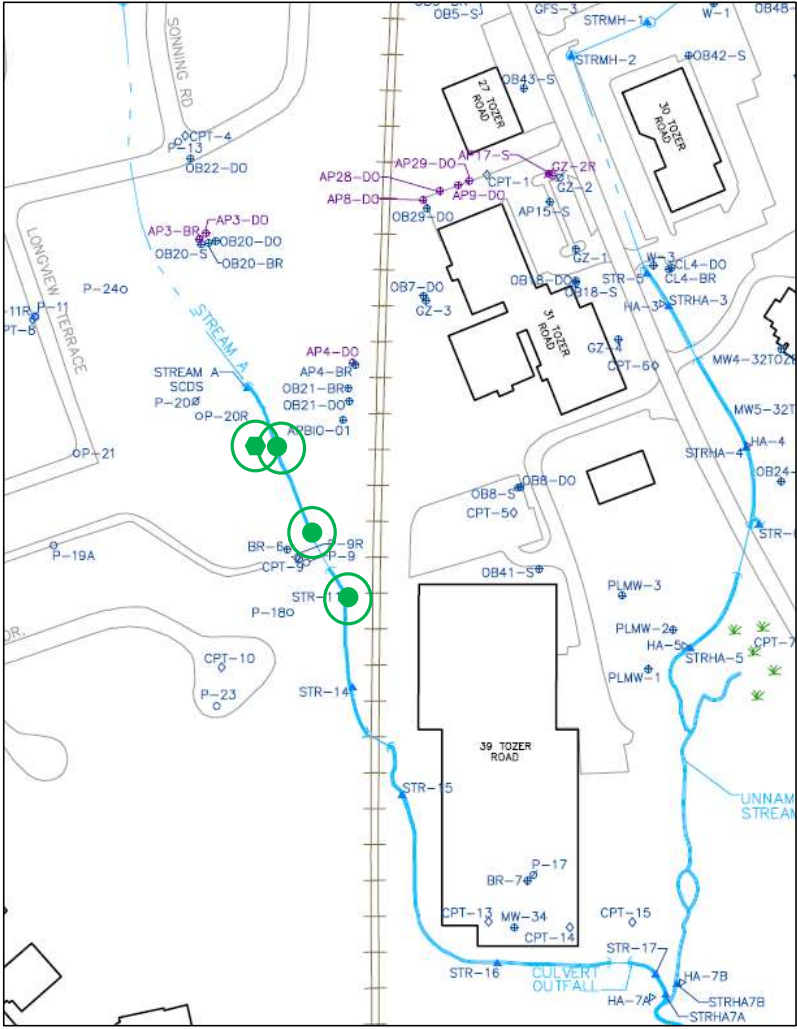
UNNAMED STREAM SUPPLEMENTAL SEDIMENT ASSESSMENT

▲ Sediment Sampling Location



STREAM A SUPPLEMENTAL SURFACE WATER ASSESSMENT

- Surface Water Sampling Location
- Potential Point Discharge of Groundwater



APPROXIMATE SCHEDULE

- ▶ Residential Sampling Completed in Mid-March 2021
- ▶ Stream A Survey & Testing in March 2021
- ▶ Well Installation Completed by End of April 2021
- ▶ Site-wide Testing of Groundwater and Surface Water in May 2021



ADDITIONAL EVALUATIONS

- ▶ Confirmation Testing for Potential Vapor Intrusion at Tozer Road Commercial Properties
- ▶ Report on Source Area Assessment and Potential Benefit of Supplemental Assessment Technologies
- ▶ Cleanup Summary Report with Discussion of Technologies or Modifications to Improve Treatment of Source Areas



QUESTIONS





Expect the Extraordinary.